



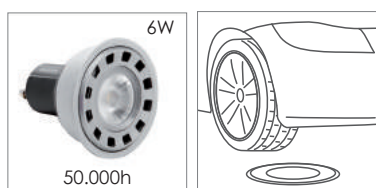
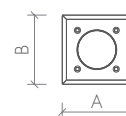
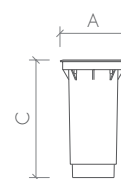
MINI-INCAS-LED





Apparecchio calpestabile da incasso a pavimento.
 Corpo in alluminio pressofuso, corpo esterno in policarbonato, vetro temperato trasparente spessore 12 mm, guarnizione in silicone, tensione di rete 220-240V, 50/60 Hz - dimmerabile tramite dimmer a taglio di fase o PWM.
 Prodotto costruito in conformità alle vigenti norme EN / IEC 60598-1:2008.

Recessed floor walkable fixture.
 In die cast aluminium body, polycarbonate external body, tempered transparent glass mm 12 thickness, silicone gasket, mains voltage 220-240V, 50/60 Hz dimmable by phase cutting dimmer or PWM.
 Fitting manufactured according to the EN / IEC 60598-1:2008 rules.

DIMENSIONS

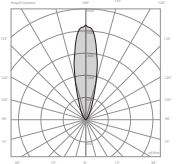


	A	B	C	Kg	mc		
D1	100	-	177	1,3	0,005	1	80
D2	100	100	177	1,3	0,005	1	80



mod/R

Copertura cornice rotonda in acciaio inox.
Stainless steel round cover frame.



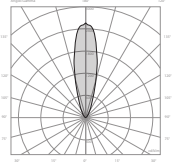
IP67 850° IK08

Cod.	W-Tot.	°k	Lm (Tc=25°)	Lm (Output)	Dimension
7045LD4R06TD	6	4000	460	345	D1



mod/Q

Copertura cornice quadrata in acciaio inox.
Stainless steel square cover frame.



IP67 850° IK08

Cod.	W-Tot.	°k	Lm (Tc=25°)	Lm (Output)	Dimension
7045LD4Q06TD	6	4000	460	345	D2