

# FIESTA LED EVO

APPARECCHI TESTAPALO E SYSTEMS - POLE TOP LIGHT FITTINGS AND SYSTEMS



## LED

21.7W - 4000K - **3315 lm** - 220-240V 50/60Hz  
21.7W - 3000K - **3166 lm** - 220-240V 50/60Hz

## CUT-OFF

■ Nero - Black  
■ Verde - Green

Apparecchio per utilizzo su pastorale  
Fiesta System e braccio a parete  
Corpo in termoindurente  
Diffusore in acrilico opale bianco  
Viteria in acciaio inox A2

## Cablaggio

Circuito circolare 50Led  
Alimentazione in corrente 700mA  
Emissione rotosimmetrica  
Driver elettronico incluso

Fitting for use on pastoral bracket  
Fiesta System and wall-fixing bracket  
Thermosetting body  
White PMMA diffuser  
A2 Stainless steel screws

## Wiring

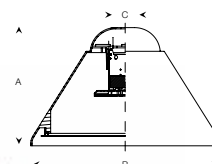
Round LED circuit, 50 LEDs  
Power supplied at 700mA  
Symmetric throw  
Electronic driver included

A+

CE IP55 - IK08



Dimensioni Dimensions	Potenza Power	Colore Colour	Codice Code	
Ø440x290mm	■ 21.7W 4000K 3315 lm	■	1031.182N	1
Ø440x290mm	■ 21.7W 3000K 3166 lm	■	1031.184N	1
Ø440x290mm	■ 21.7W 4000K 3315 lm	■	1031.182V	1
Ø440x290mm	■ 21.7W 3000K 3166 lm	■	1031.184V	1



A290  
BØ440  
CØ40

# FIESTA LED EVO SYSTEM

APPARECCHI TESTAPALO E SYSTEMS - POLE TOP LIGHT FITTINGS AND SYSTEMS

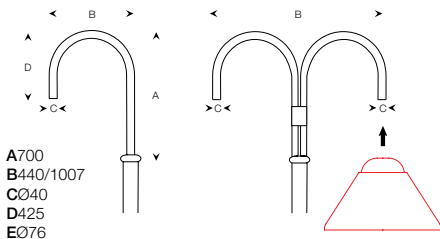
■ Nero - Black



1 luce - light



2 luci - lights



A700  
B440/1007  
CØ40  
D425  
EØ76

Asola e morsettiera 4x6mm<sup>2</sup> CLII con porta fusibile e portello di chiusura  
Chiave apertura/chiusura portello a richiesta (codice 1440.000 N)  
Raccordi di connessione per 1/2/3 apparecchi  
Verniciatura a polvere con pretattamento speciale per esterni  
Viteria in acciaio inox A2

**Palo interrato - System A**  
Palo cilindrico Ø76x4100mm in acciaio zincato a caldo 75µm UNI EN 1461  
Pastorale in acciaio zincato a caldo Ø40mm (1 luce) o Ø28mm (2 luci) UNI EN 1461

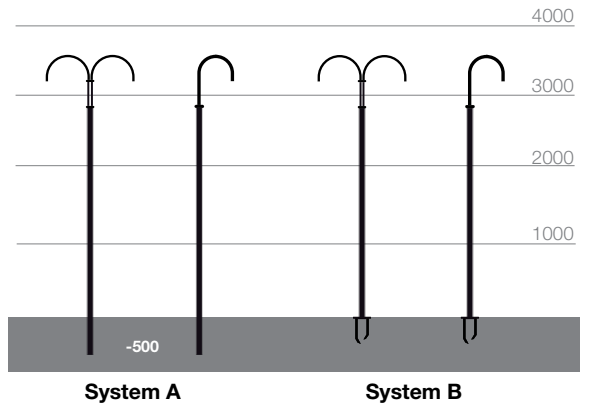
**Palo flangiato - System B**  
Palo cilindrico Ø76x3600mm completo di flangia in acciaio zincato a caldo 75µm UNI EN 1461  
Pastorale in acciaio zincato a caldo Ø40mm (1 luce) o Ø28mm (2 luci) 75µm UNI EN 1461  
Flangia 250x250mm spessore 10mm in acciaio zincato a caldo 75µm UNI EN 1461

Hole and terminal block 4x6mm<sup>2</sup> CLII with fuse holder and inspection door  
On request inspection door opening/closing key (art. 1440.000N)  
1/2/3 lights connector  
Polyester powder coating after a treatment specific for weathering resistance  
A2 stainless steel screws

**Buried pole - System A**  
Cylindrical pole Ø76x4100mm for ground fixing made of hot-dip galvanised steel 75µm UNI EN 1461  
Hot dipped galvanised steel pastoral bracket Ø40mm (1 light) Ø28mm (2lights)

**Flanged pole - System B**  
Cylindrical pole Ø76x3600mm for plinth/floor fixing complete with flange made of hot-dip galvanised steel 75µm UNI EN 1461  
Hot dipped galvanised steel pastoral bracket Ø40mm (1light) Ø28mm (2lights) 75µm UNI EN 1461  
250x250mm flange, 10mm thick made of hot-dip galvanised steel 75µm UNI EN 1461

**Palo a norme DIN**  
Pole conforming to DIN norms



## SYSTEM A BURIED POLE

Altezza totale Total height	Altezza fuori terra Total ground height	Luci Lights	Colore Colour	Codice Code	Icona
4100mm	3600mm	1	■	1428.100N	1
4100mm	3600mm	2	■	1428.200N	1

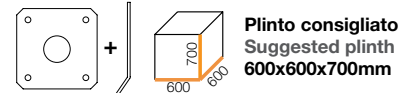
## SYSTEM B FLANGED POLE

Altezza totale Total height	Altezza fuori terra Total ground height	Luci Lights	Colore Colour	Codice Code	Icona
3600mm	3600mm	1	■	1428.10FN	1
3600mm	3600mm	2	■	1428.20FN	1



Kit controflangia 250x250x3mm e tirafondi M16x500mm obbligatorio  
Compulsory counter flange 250x250x3mm and anchor bolt M16x500mm kit

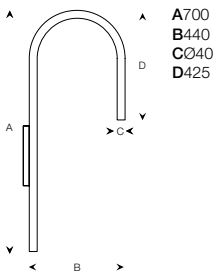
Codice Code	Icona
4000.0002	1



# FIESTA LED EVO SYSTEM PARETE

APPARECCHI TESTAPALO E SYSTEMS - POLE TOP LIGHT FITTINGS AND SYSTEMS

■ Nero - Black



A700  
B440  
CØ40  
D425

Accessorio per utilizzo a parete  
Braccio tubolare cilindrico completo di adattatore Ø60mm in acciaio zincato a caldo 75µm UNI EN 1461 per montaggio dritto o rovesciato con viteria di connessione per fissaggio a parete  
Braccio in acciaio zincato a caldo Ø40mm UNI EN 1461  
Verniciatura a polvere con pretattamento speciale per esterni  
Viteria in acciaio inox A2

Accessory for wall mounting  
Cylindrical bracket complete with adaptor Ø60mm in hot-dip galvanised steel 75µm UNI EN 1461, including connecting screws for wall fixing  
Pastoral bracket Ø40mm, made of hot dipped galvanised steel UNI EN 1461  
Polyester powder coating after a treatment specific for weathering resistance  
A2 stainless steel screws



Dimensioni Dimensions	Colore Colour	Codice Code	Icona
700x430mm	■	1000.111N	1

