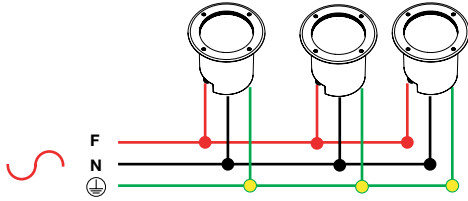


LIRA 180 - 240

INCASSI - RECESSED LIGHT FITTINGS

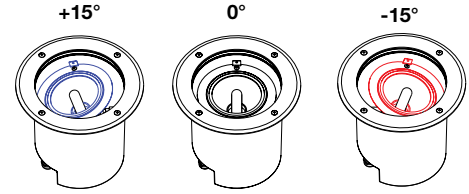
Lira 240
Lira 180

Alimentazione diretta a tensione di rete 220-240V 50-60Hz
Mains powered 220-240V 50-60Hz



Basculabilità su attacco G12
Adjustable optics (only G12 version)

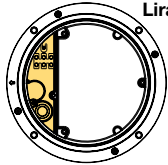
Lira 240



Resinatura
Resin sealing



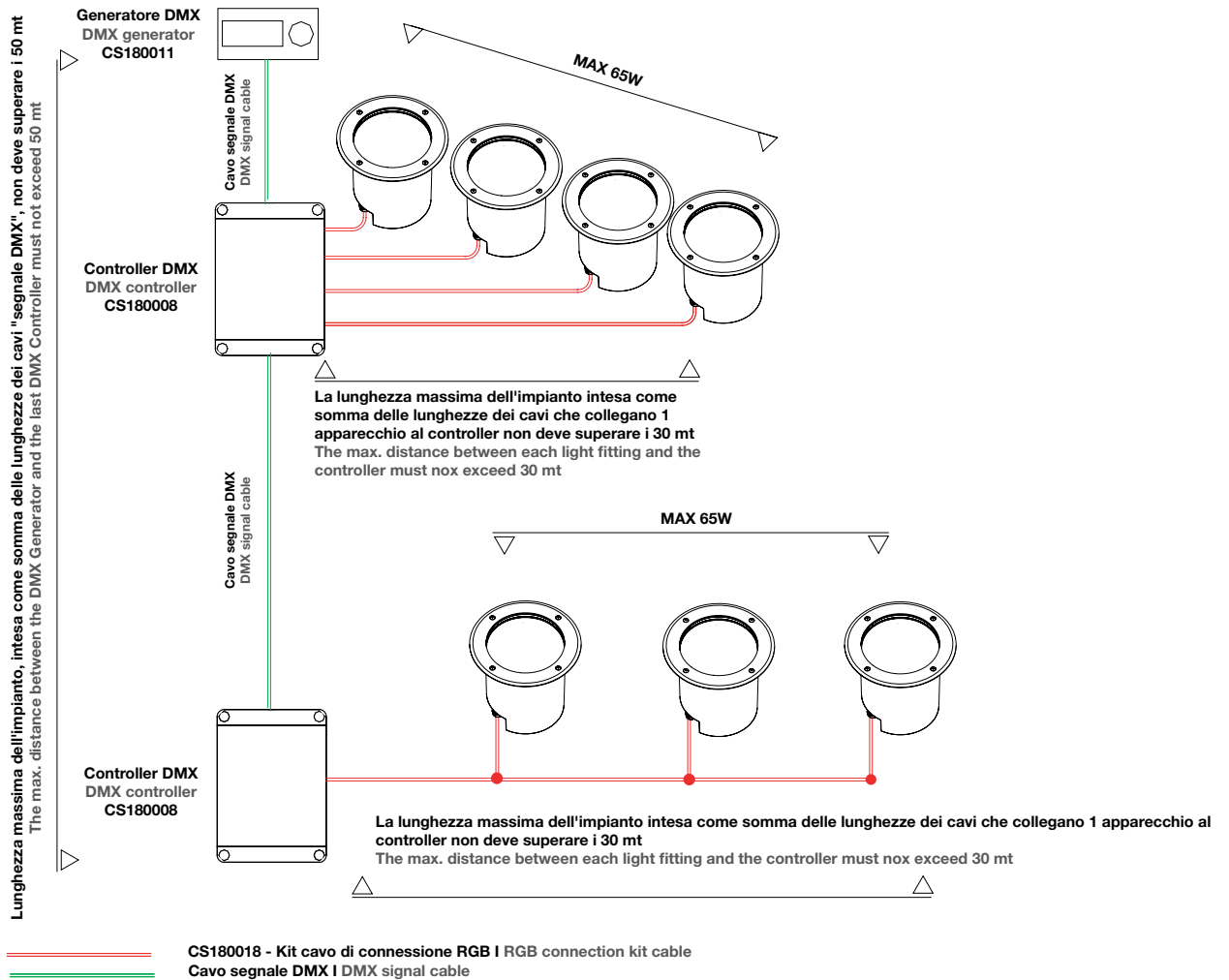
Lira 180



Lira 240

Morsettera interna resinata
Factory sealed termination chamber utilising resin to guarantee sealing

Installazione sistema RGB
RGB installation diagram



LIRA 180

INCASSI - RECESSED LIGHT FITTINGS



LED

11.6W - 4000K - **1731 lm** - 220-240V 50/60Hz
 11.6W - 3000K - **1674 lm** - 220-240V 50/60Hz
 13W - 4000K - **1210 lm** - 220-240V 50/60Hz
 13W - 3000K - **1210 lm** - 220-240V 50/60Hz
 3x1.5mm² H07RN-F (1mt)

RGB

9W - full color - 12V PWM
 4x0.5mm² H05RN-F (1mt)

E27

max 18W
 3x1.5mm² H07RN-F (1mt)
 Lampada non inclusa
 Lamp not included

AISI 316L Inox 316L - Stainless steel

CE IP67 - IK08
 CARRABILE
 Max Load
 2500Kg
 20Km/h



Morsetteria interna resinata
 Modalità di installazione a pavimento con utilizzo di controcassa circolare
 Diffusore in vetro piano temperato trasparente spessore 12mm (versione 11.6W e 9W)
 Diffusore in vetro piano temperato acidato spessore 12mm (versione 13W e E27)
 Controcassa in tecnopolimero rinforzato
 Corpo in pressofusione di alluminio anodizzato
 Cornice tonda in acciaio inox AISI 316L
 Viteria in acciaio inox A2

Factory sealed termination chamber utilising resin to guarantee sealing
 Recessed box for floor installation
 Flat, transparent, tempered glass diffuser, 12mm thickness (11.6W LED's and 9W version)
 Flat, brushed, tempered glass diffuser, 12mm thickness (13W LED's and E27 version)
 Black reinforced thermoplastic recessed box
 Anodised die-cast aluminium body
 AISI 316L stainless steel round ring
 A2 stainless steel screws



VETRO ACIDATO BRUSHED DIFFUSER

| Dimensioni Dimensions | Potenza Power | Colore Colour | Codice Code | |
|--------------------------|-------------------|------------------|----------------|---|
| Ø180x270mm | 13W 3000K 1210 lm | AISI 316L | 4180.191W | 1 |
| Ø180x270mm | 13W 4000K 1210 lm | AISI 316L | 4180.192W | 1 |
| Ø180x270mm | * max 18W - E27 | AISI 316L | 4180.101W | 1 |

Dimensione Dimension * (max Ø80 L110mm) Lampada non inclusa Lamp not included

VETRO TRASPARENTE TRANSPARENT DIFFUSER

| Dimensioni Dimensions | Potenza Power | Colore Colour | Codice Code | |
|--------------------------|-------------------------|------------------|----------------|---|
| Ø180x270mm | 11.6W 4000K 20° 1731 lm | AISI 316L | 4180.482W | 1 |
| Ø180x270mm | 11.6W 4000K 35° 1731 lm | AISI 316L | 4180.582W | 1 |
| Ø180x270mm | 11.6W 4000K 50° 1731 lm | AISI 316L | 4180.682W | 1 |
| Ø180x270mm | 11.6W 3000K 20° 1674 lm | AISI 316L | 4180.484W | 1 |
| Ø180x270mm | 11.6W 3000K 35° 1674 lm | AISI 316L | 4180.584W | 1 |
| Ø180x270mm | 11.6W 3000K 50° 1674 lm | AISI 316L | 4180.684W | 1 |
| Ø180x270mm | 9W 30° RGB | AISI 316L | 4180.183W | 1 |

ACCESSORI - ACCESSORIES

| | | |
|---|-----------|---|
| Controcassa circolare Ø190x270mm - Recessed box Ø190x270mm | 7000.0002 | 1 |
| Morsetteria lineare IP68 - IP68 connector | CS093000 | 1 |
| Morsetteria derivazione a "T" IP68 - "T"-3 way IP68 connector | CS093001 | 1 |

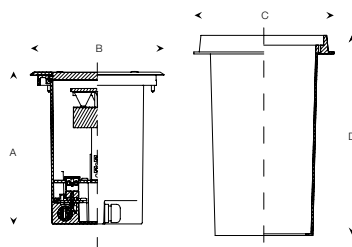
ACCESSORI OBBLIGATORI LED RGB COMPULSORY ACCESSORIES LED RGB

| | | | |
|---|---------|----------|---|
| Generatore DMX - DMX generator | Pag.153 | CS180011 | 1 |
| Controller DMX - DMX controller | Pag.153 | CS180008 | 1 |
| Kit cavo 4 poli - Kit 4 pole | Pag.153 | CS180018 | 1 |
| Morsetteria lineare IP68 - IP68 connector | Pag.153 | CS093002 | 1 |

| Generatore DMX 12VPWM DMX generator 12VPWM CS180011 | Controller DMX 12VPWM DMX controller 12VPWM CS180008 | Kit cavo connessione 4 poli Connection kit cable 4 poles CS180018 |
|---|--|---|
| • | max 5 | • |

Controcassa circolare Circular recessed box

A205
 BØ180
 CØ190
 D270



Morsetteria IP68 IP68 connectors

