

KAPPADUE

ARCHITETTURALI - ARCHITECTURAL LIGHT FITTINGS

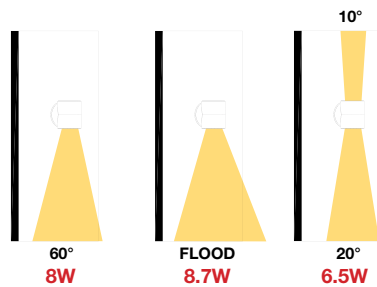


LED

8.7W - 4000K - **800 lm** - 220-240V 50/60Hz
 8.7W - 3000K - **800 lm** - 220-240V 50/60Hz
 8W - 4000K - **620 lm** - 220-240V 50/60Hz
 8W - 3000K - **620 lm** - 220-240V 50/60Hz
 6.5W - 4000K - **642 lm** - 12VDC
 6.5W - 3000K - **600 lm** - 12VDC

LAMPADA LED GU10 INCLUSA
 GU10 LED LAMP INCLUDED

Grigio bucciato - Textured grey
 Nero - Black



CE IP65 - IK08



MONO EMISSIONE SINGLE EMISSION

Dimensioni Dimensions	Potenza Power	Colore Colour	Codice Code	
86x92mm	8.7W 4000K 800 lm	Grigio	0150.192G	1
86x92mm	8.7W 4000K 800 lm	Nero	0150.192N	1
86x92mm	8.7W 3000K 800 lm	Grigio	0150.191G	1
86x92mm	8.7W 3000K 800 lm	Nero	0150.191N	1
86x92mm	* 8W 4000K 620 lm - GU10	Grigio	0150.282G	1 new
86x92mm	* 8W 4000K 620 lm - GU10	Nero	0150.282N	1 new
86x92mm	* 8W 3000K 620 lm - GU10	Grigio	0150.284G	1 new
86x92mm	* 8W 3000K 620 lm - GU10	Nero	0150.284N	1 new

Dimensione Dimension * (max Ø50 L56mm) Lampada inclusa Lamp included

BI EMISSIONE DOUBLE EMISSION

Dimensioni Dimensions	Potenza Power	Colore Colour	Codice Code	
86x92mm	6.5W 4000K 642 lm	Grigio	0152.172G	1
86x92mm	6.5W 4000K 642 lm	Nero	0152.172N	1
86x92mm	6.5W 3000K 600 lm	Grigio	0152.184G	1
86x92mm	6.5W 3000K 600 lm	Nero	0152.184N	1

ACCESSORI OBBLIGATORI LED BI EMISSIONE COMPULSORY ACCESSORIES LED DOUBLE EMISSION

Alimentatore elettronico 12VDC 20W IP20 Electronic driver 12VDC 20W IP20	CS160010	1
Alimentatore elettronico 12VDC 70W IP67 Electronic driver 12VDC 70W IP67	CS160008	1

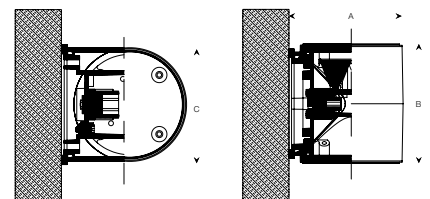
Alimentatore elettronico Electronic driver 12VDC 20W CS160010	Alimentatore elettronico Electronic driver 12VDC 70W CS160008
max 1	max 6

Apparecchio wall-washer mono-emissione o bi-emissione per illuminazione diretta o indiretta
 Soppressore integrato per i disturbi di rete (Led mono emissione)
 Apparecchio senza driver (Led mono emissione)
 Cappello di chiusura a filo in alluminio verniciato (mono emissione)
 Basamento e corpo in pressofusione di alluminio anodizzato e verniciato
 Verniciatura a polvere con pretattamento speciale per esterni
 Viteria in acciaio inox A2
Kappadue mono-emissione con vetro acidato serigrafato:
 - 8.7W 4000K/3000K - Ottica Flood
 - 8W 4000K/3000K - Ottica Flood
Kappadue bi-emissione con vetro trasparente serigrafato:
 - 6.5W 4000K/3000K - Ottica 10° - 20°
 alimentatore remoto obbligatorio 20W/70W

Single emission or double emission wall washer light fitting for direct or indirect lighting
 MOV (metal oxide varistor) and RFI suppressed on board (LED single emission version)
 Direct supply tension with no driver (LED single emission version)
 Painted aluminium closing cap (single emission version)
 Anodised and painted die-cast aluminium base and body
 Polyester powder coating after a treatment specific for weathering resistance
 A2 stainless steel screws
Kappadue single emission with printed brushed tempered glass diffuser:
 - 8.7W 4000K/3000K - Flood optics
 - 8W 4000K/3000K - Flood optics
Kappadue double emission with printed transparent tempered glass diffuser:
 - 6.5W 4000K/3000K 10° - 20° optics
 compulsory remote driver 20W/70W



A90
 B92
 C86



CUT-OFF
 mono emissione
 single emission