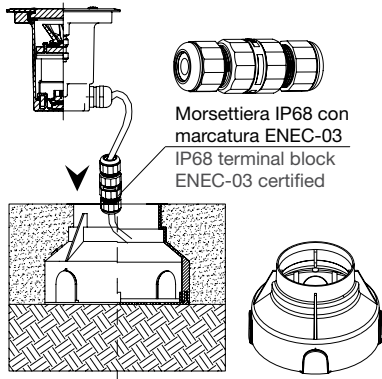


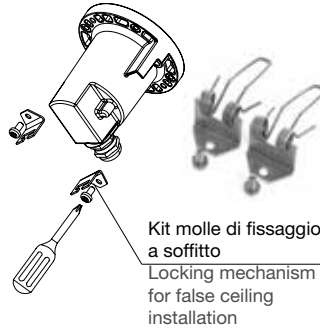
LIRA 95 - 100

INCASSI - RECESSED LIGHT FITTINGS

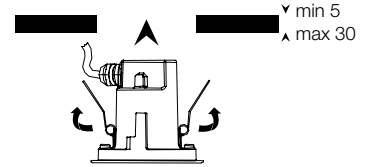
Applicazioni - Application



Controcassa circolare
Circular recessed box

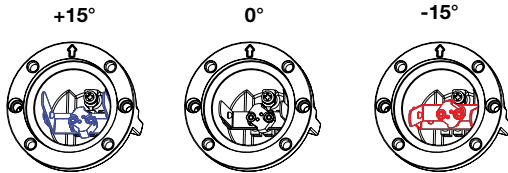


Kit molle di fissaggio a soffitto
Locking mechanism for false ceiling installation

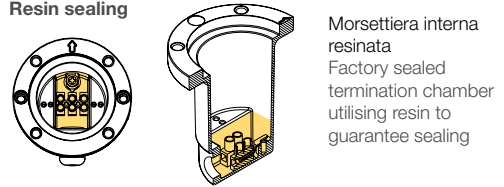


Controsoffitto
False ceiling

Basculabilità su attacco GU4 Adjustable optics (only GU4 version)

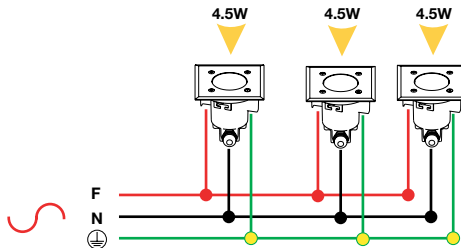


Resinatura Resin sealing



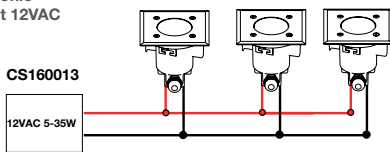
Morsetteria interna resinata
Factory sealed termination chamber utilising resin to guarantee sealing

Alimentazione diretta a tensione di rete 220-240V 50-60Hz Mains powered 220-240V 50-60Hz



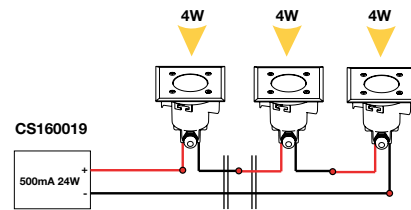
Alimentatore elettronico 12VAC
Electronic ballast 12VAC

Lampada Led GU4 max 3W
GU4 Led lamp max 3W



Alimentazione a 500mA 500mA supply

min 1 - max 3 apparecchi
min 1 - max 3 light fittings



Collegamento in serie
Series connection

ATTENZIONE

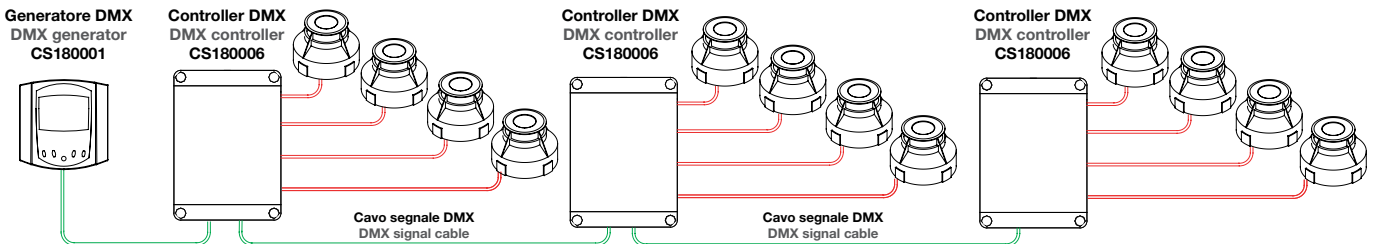
- alla potenza minima del trasformatore
- non utilizzare lampade alogene

WARNING

- pay attention to the minimum power of the electronic driver
- do not use halogen lamps



Installazione sistema RGB RGB installation diagram



Lunghezza massima dell'impianto, intesa come somma delle lunghezze dei cavi "segnale DMX", non deve superare i 50 mt
The max. distance between the DMX Generator and the last DMX Controller must not exceed 50 mt

La lunghezza massima dell'impianto intesa come somma delle lunghezze dei cavi che collegano 1 apparecchio al controller non deve superare i 30 mt
The max. distance between each light fitting and the controller must not exceed 30 mt

CS180007 - Kit cavo di connessione RGB | RGB connection kit cable

Cavo segnale DMX | DMX signal cable

LIRA 95 TONDO - ROUND

INCASSI - RECESSED LIGHT FITTINGS



LED

4W - 4000K - **543 lm** - 500mA
4W - 3000K - **510 lm** - 500mA
2x1mm² H05RN-F (0.4mt)

4.5W - 4000K - **450 lm** - 220-240V 50/60Hz
4.5W - 3000K - **450 lm** - 220-240V 50/60Hz

RGB

3W - full color - 350mA
6x0.25mm² PVC (0,4mt)

GU4

max 3W
2x1mm² H05RN-F (0.4mt)

AISI 316L Inox 316L - Stainless steel

CE IP67 - IK08 **CARRABILE**
Max Load
2000Kg
20Km/h



Driver remoto non incluso
Gruppo ottico basculabile di ±15° (solo GU4)
Morsetti interna resinata
Apparecchio senza driver (4.5W)
Soppressore integrato per i disturbi di rete (4.5W)
Modalità di installazione a pavimento con utilizzo di controcassa circolare
Chiusura inferiore e superiore della controcassa circolare per agevolare la cementazione
Modalità di installazione a parete/soffitto con apposito kit di montaggio Cod. 4000.000W
Diffusore in vetro piano temperato trasparente spessore 8mm (versione 4W, 3W e GU4)
Diffusore in vetro piano temperato acidato spessore 8mm (versione 4.5W)
Controcassa in tecnopolimero rinforzato
Corpo in pressofusione di alluminio anodizzato
Cornice tonda in acciaio inox AISI 316L
Viteria in acciaio inox A2

Electronic driver (remote, to be ordered separately)
Adjustable +/- 15° (GU4 version)
Factory sealed termination chamber utilising resin to guarantee sealing
Mains powered, no driver needed (LED's 4.5W version)
MOV (metal oxide varistor) and RFI suppressed on board (LED's 4.5W version)
Recessed box closed above and below to facilitate concreting
Locking mechanism for false ceiling installation
Cod. 4000.001W
Flat, transparent, tempered glass diffuser, 8mm thickness (4W, 3W LED's and GU4 versions)
Flat, brushed, tempered glass diffuser, 8mm thickness (4.5W LED's version)
Black reinforced thermoplastic recessed box
Anodised die-cast aluminium body
AISI 316L stainless steel round ring
A2 stainless steel screws



20° - 40°

80°x20°

VETRO ACIDATO BRUSHED DIFFUSER

Dimensioni Dimensions	Potenza Power	Colore Colour	Codice Code	
Ø95x85mm	4.5W 3000K 450 lm	AISI 316L	4095.191W	1
Ø95x85mm	4.5W 4000K 450 lm	AISI 316L	4095.192W	1

VETRO TRASPARENTE TRANSPARENT DIFFUSER

Ø95x85mm	4W 4000K 20° 543 lm	AISI 316L	4095.482W	1
Ø95x85mm	4W 3000K 20° 510 lm	AISI 316L	4095.484W	1
Ø95x85mm	4W 4000K 40° 543 lm	AISI 316L	4095.582W	1
Ø95x85mm	4W 3000K 40° 510 lm	AISI 316L	4095.584W	1
Ø95x85mm	4W 4000K 80°x20° 543 lm	AISI 316L	4095.682W	1
Ø95x85mm	4W 3000K 80°x20° 510 lm	AISI 316L	4095.684W	1
Ø95x85mm	* max 3W - GU4	AISI 316L	4095.177W	1
Ø95x85mm	3W 30° RGB	AISI 316L	4095.183W	1

Dimensione Dimension * (max Ø35 L40mm) Lampada non inclusa
Lamp not included

ACCESSORI - ACCESSORIES

Alimentatore elettronico 500mA 24W - Electronic driver 500mA 24W	CS160019	1
Alimentatore GU4 12VAC - Electronic driver GU4 12VAC	CS160013	1
Kit di fissaggio controsoffitto - False ceiling locking mechanism kit	4000.000W	1
Controcassa circolare Ø144x100mm - Recessed box Ø144x100mm	7000.0004	1
Morsettiere lineare IP68 - IP68 connector	CS093000	1
Morsettiere derivazione a "T" IP68 - "T"-3 way IP68 connector	CS093001	1

Alimentatore elettronico
Electronic driver
500mA 24W
CS160019
min 1 - max 3

Morsettiere IP68
IP68 connectors

ACCESSORI OBBLIGATORI LED RGB COMPULSORY ACCESSORIES LED RGB

Generatore DMX - DMX generator	Pag.152	CS180001	1
Controller DMX - DMX controller	Pag.152	CS180006	1
Kit cavo 6 poli - Kit 6 pole	Pag.152	CS180007	1

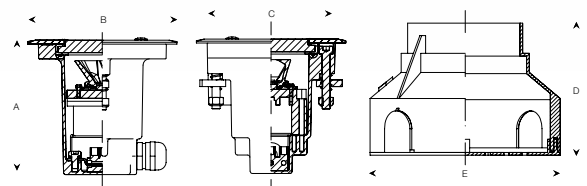
Generatore DMX 350mA DMX generator 350mA CS180001	Controller DMX 350mA DMX controller 350mA CS180006	Kit cavo connessione 6 poli Connection kit cable 6 poles CS180007
•	max 4	•



flood

A85
BØ95
CØ81
D100
EØ144

Controcassa circolare
Circular recessed box



Controsoffitto
False ceiling

