

# RIGA 220

ARCHITETTURALI - ARCHITECTURAL LIGHT FITTINGS



## LED

10W - 4000K - **930 lm** - 220-240V 50/60Hz  
 10W - 3000K - **930 lm** - 220-240V 50/60Hz  
 20W - 4000K - **1860 lm** - 220-240V 50/60Hz  
 20W - 3000K - **1860 lm** - 220-240V 50/60Hz

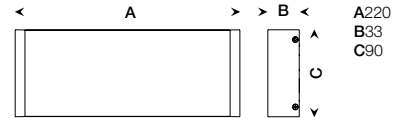
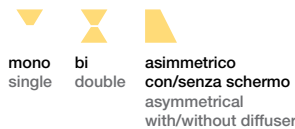
- B Bianco - White
- Grigio metallizzato - Metallic grey
- Corten - Rust
- Antracite - Anthracite



CE IP67 - IK08

Sistema lineare per utilizzo diretto a parete  
 Pre-foratura per fissaggio a parete, compatibile con scatole incasso universali 3 moduli  
 Circuito led ad allacciamento diretto alla rete senza driver  
 Processo di resinatura delle barre a led tramite resina poliuretana bianca  
 Schermo in acrilico trasparente opacizzato (versione asimmetrica)  
 Corpo in alluminio estruso anodizzato e verniciato  
 Carter di copertura in alluminio estruso anodizzato e verniciato  
 Barra led in alluminio estruso anodizzato e verniciato  
 Viteria in acciaio inox A2  
**Testate decorative**  
 Testatine laterali ad incastro in tecnopolimero rinforzato e verniciato

Architectural luminaire for wall application  
 Pre-set fixing holes  
 Mains supplied LED's circuit without driver  
 LED's bars sealed with non-wearing white polyurethane resin  
 Translucent PMMA (acrylic) diffuser (asymmetric version)  
 Anodized and painted extruded aluminium body (base and front cover)  
 Anodized and painted extruded aluminium LED's bar  
 A2 stainless steel screws  
**Decorative side heads**  
 Interlocking side heads in painted reinforced thermoplastic



### MONO EMISSIONE - SINGLE EMISSION

Dimensioni Dimensions	Potenza Power	Colore Colour	Codice Code	
220x33x90mm	10W 4000K 930 lm	<span style="border: 1px solid black; padding: 2px;">B</span>	0230.282B	1
220x33x90mm	10W 3000K 930 lm	<span style="border: 1px solid black; padding: 2px;">B</span>	0230.284B	1
220x33x90mm	10W 4000K 930 lm	<span style="background-color: #cccccc; border: 1px solid black; padding: 2px;"></span>	0230.282M	1
220x33x90mm	10W 3000K 930 lm	<span style="background-color: #cccccc; border: 1px solid black; padding: 2px;"></span>	0230.284M	1
220x33x90mm	10W 4000K 930 lm	<span style="background-color: #8b4513; border: 1px solid black; padding: 2px;"></span>	0230.282J	1
220x33x90mm	10W 3000K 930 lm	<span style="background-color: #8b4513; border: 1px solid black; padding: 2px;"></span>	0230.284J	1
220x33x90mm	10W 4000K 930 lm	<span style="background-color: #333333; border: 1px solid black; padding: 2px;"></span>	0230.282S	1
220x33x90mm	10W 3000K 930 lm	<span style="background-color: #333333; border: 1px solid black; padding: 2px;"></span>	0230.284S	1

### BI EMISSIONE - DOUBLE EMISSION

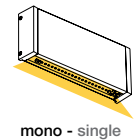
Dimensioni Dimensions	Potenza Power	Colore Colour	Codice Code	
220x33x90mm	20W 4000K 1860 lm	<span style="border: 1px solid black; padding: 2px;">B</span>	0231.282B	1
220x33x90mm	20W 3000K 1860 lm	<span style="border: 1px solid black; padding: 2px;">B</span>	0231.284B	1
220x33x90mm	20W 4000K 1860 lm	<span style="background-color: #cccccc; border: 1px solid black; padding: 2px;"></span>	0231.282M	1
220x33x90mm	20W 3000K 1860 lm	<span style="background-color: #cccccc; border: 1px solid black; padding: 2px;"></span>	0231.284M	1
220x33x90mm	20W 4000K 1860 lm	<span style="background-color: #8b4513; border: 1px solid black; padding: 2px;"></span>	0231.282J	1
220x33x90mm	20W 3000K 1860 lm	<span style="background-color: #8b4513; border: 1px solid black; padding: 2px;"></span>	0231.284J	1
220x33x90mm	20W 4000K 1860 lm	<span style="background-color: #333333; border: 1px solid black; padding: 2px;"></span>	0231.282S	1
220x33x90mm	20W 3000K 1860 lm	<span style="background-color: #333333; border: 1px solid black; padding: 2px;"></span>	0231.284S	1

### ASIMMETRICO SENZA SCHERMO - ASYMMETRICAL WITHOUT DIFFUSER

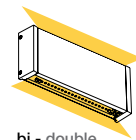
Dimensioni Dimensions	Potenza Power	Colore Colour	Codice Code	
220x33x90mm	10W 4000K 930 lm	<span style="border: 1px solid black; padding: 2px;">B</span>	0232.282B	1
220x33x90mm	10W 3000K 930 lm	<span style="border: 1px solid black; padding: 2px;">B</span>	0232.284B	1
220x33x90mm	10W 4000K 930 lm	<span style="background-color: #cccccc; border: 1px solid black; padding: 2px;"></span>	0232.282M	1
220x33x90mm	10W 3000K 930 lm	<span style="background-color: #cccccc; border: 1px solid black; padding: 2px;"></span>	0232.284M	1
220x33x90mm	10W 4000K 930 lm	<span style="background-color: #8b4513; border: 1px solid black; padding: 2px;"></span>	0232.282J	1
220x33x90mm	10W 3000K 930 lm	<span style="background-color: #8b4513; border: 1px solid black; padding: 2px;"></span>	0232.284J	1
220x33x90mm	10W 4000K 930 lm	<span style="background-color: #333333; border: 1px solid black; padding: 2px;"></span>	0232.282S	1
220x33x90mm	10W 3000K 930 lm	<span style="background-color: #333333; border: 1px solid black; padding: 2px;"></span>	0232.284S	1

### ASIMMETRICO CON SCHERMO - ASYMMETRICAL WITH DIFFUSER

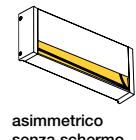
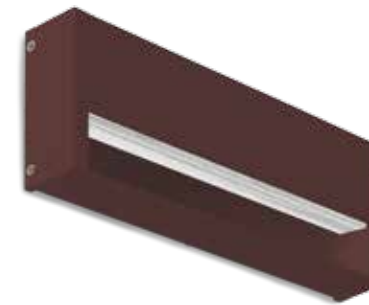
Dimensioni Dimensions	Potenza Power	Colore Colour	Codice Code	
220x33x90mm	10W 4000K 930 lm	<span style="border: 1px solid black; padding: 2px;">B</span>	0233.282B	1
220x33x90mm	10W 3000K 930 lm	<span style="border: 1px solid black; padding: 2px;">B</span>	0233.284B	1
220x33x90mm	10W 4000K 930 lm	<span style="background-color: #cccccc; border: 1px solid black; padding: 2px;"></span>	0233.282M	1
220x33x90mm	10W 3000K 930 lm	<span style="background-color: #cccccc; border: 1px solid black; padding: 2px;"></span>	0233.284M	1
220x33x90mm	10W 4000K 930 lm	<span style="background-color: #8b4513; border: 1px solid black; padding: 2px;"></span>	0233.282J	1
220x33x90mm	10W 3000K 930 lm	<span style="background-color: #8b4513; border: 1px solid black; padding: 2px;"></span>	0233.284J	1
220x33x90mm	10W 4000K 930 lm	<span style="background-color: #333333; border: 1px solid black; padding: 2px;"></span>	0233.282S	1
220x33x90mm	10W 3000K 930 lm	<span style="background-color: #333333; border: 1px solid black; padding: 2px;"></span>	0233.284S	1



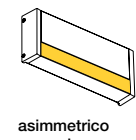
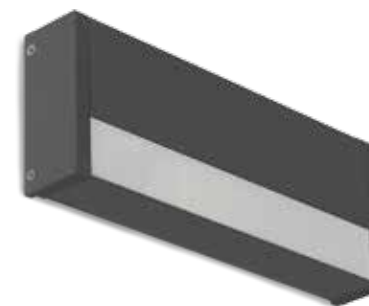
mono - single



bi - double



asimmetrico  
senza schermo  
asymmetrical  
without diffuser



asimmetrico  
con schermo  
asymmetrical  
with diffuser