

PRINCE

Proiettore per interni ed esterni. Corpo in alluminio trafilato ossidato, tappi laterali in alluminio pressofuso verniciato con polvere termoindurente poliesteri anticorrosione colore silver, vetro temperato trasparente spessore 4 mm, guarnizione in silicone, driver elettronico 220-240V 50/60Hz. Prodotto in conformità alle vigenti norme EN / IEC 60598-1:2018.

Indoor and outdoor floodlight. Extruded oxidate aluminium body, die cast aluminium cap, coated with polyester anticorrosion powder, silver color, 4 mm thick tempered transparent glass, silicon gasket, electronic driver 220-240V 50/60Hz. Manufactured in accordance with EN / IEC 60598-1:2018.



INSTALLAZIONE / INSTALLATION



Dotazione

Cablaggio esterno tramite connettore rapido IP66.

Equipment

External wiring via IP66 rapid connector.



RAL 9006

Δ LUMEN

3000°K (CRI >80) = **-5.28%**
 4000°K (CRI >80) = **standard**
 5000°K (CRI >80) = **+0.90%**

CARATTERISTICHE / MAIN FEATURES

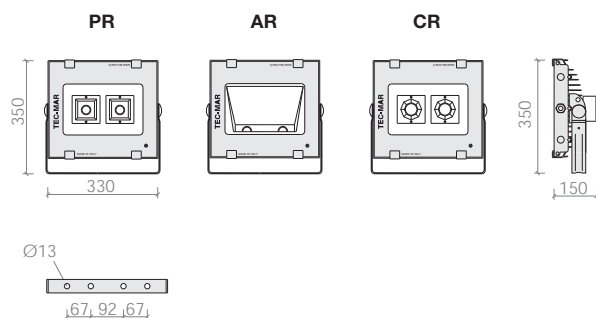
LED | CE | 220 V_≈ | -25°C | IP65 | IK08 | RG0 | CRI >80 | 3 step MacAdam | <7% LOW flicker | L80-B20 >50.000h | L80-B50 >75.000h | |

CODIFICA / CODING

Art.	+	Mod.	+ °K (CRI)	+ W. tot.	+ Options
8095		PR	3 = 3000°K (CRI >80)	120	EL = on/off
		CR	4 = 4000°K (CRI >80)	150	LM = 1-10v
		AR	5 = 5000°K (CRI >80)	185	LD = dali
				200	E1 = em. 1h
					VI = vetro infrangibile / shatterproof glass
					VS = vetro sabbiato / sanded glass

DIMENSIONI / DIMENSIONS

	A	B	C	Kg	mc	
D1	330	150	350	6,5	0,022	50



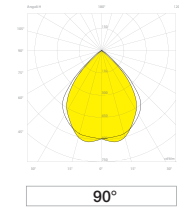
Mod. PR

Optica

Riflettore simmetrico 90° in alluminio satinato

Optic

90° wide beam matt satin aluminium reflector



W tot.	°K - CRI	n° Led	LUMEN LED	LUMEN OUTPUT	Lm/W	replace	dimension
120	4000K - CRI>80	2	20589	16533	138	250W JM/SAP	D1
150	4000K - CRI>80	2	24559	19721	131	250W SAP/SAP	D1
185	4000K - CRI>80	2	29292	23522	127	400W JM	D1
200	4000K - CRI>80	2	31858	25572	128	400W JM/SAP	D1

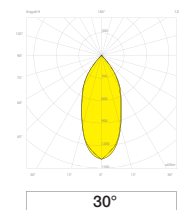
Mod. CR

Optica

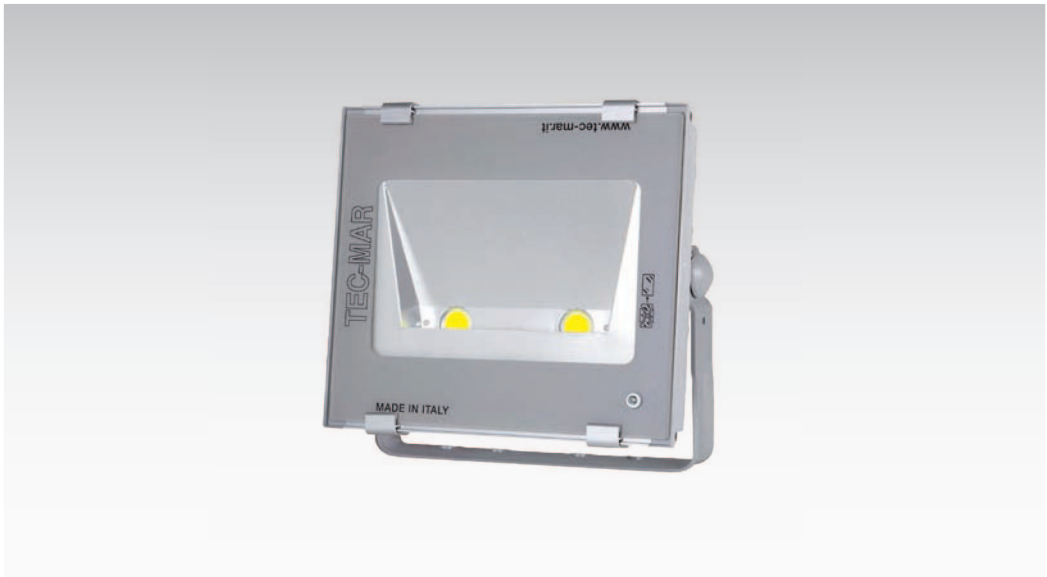
Riflettore concentrante 30° in alluminio satinato

Optic

30° narrow beam matt satin aluminium reflector



W tot.	°K - CRI	n° Led	LUMEN LED	LUMEN OUTPUT	Lm/W	replace	dimension
120	4000K - CRI>80	2	20589	14977	125	250W JM/SAP	D1
150	4000K - CRI>80	2	24559	17865	119	250W SAP/SAP	D1
185	4000K - CRI>80	2	29292	21308	115	400W JM	D1
200	4000K - CRI>80	2	31858	23165	116	400W JM/SAP	D1



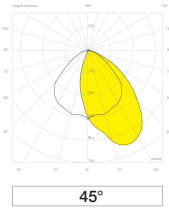
Mod. AR

Ottica

Riflettore asimmetrico 45° in alluminio satinato

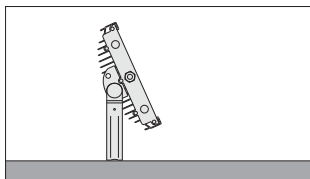
Optic

45° asymmetric beam matt satin aluminium reflector



W tot.	°K - CRI	n° Led	LUMEN LED	LUMEN OUTPUT	Lm/W	replace	dimension
120	4000K - CRI>80	2	20589	15560	130	250W JM/SAP	D1
150	4000K - CRI>80	2	24559	18561	124	250W SAP/SAP	D1
185	4000K - CRI>80	2	29292	22139	120	400W JM	D1
200	4000K - CRI>80	2	31858	24068	120	400W JM/SAP	D1

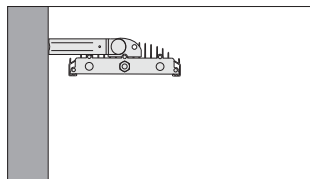
Installazione a terra
Ground installation



Apparecchio adatto per installazione a terra.

Suitable luminaire for ground installation

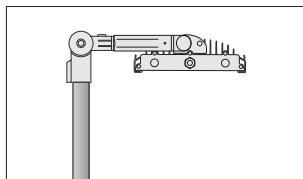
Installazione a parete
Wall installation



Apparecchio adatto per installazione a parete. (Staffa inclusa).

Suitable luminaire for wall installation. (Bracket included).

Installazione a palo
Pole installation



Apparecchio adatto per installazione su pali da Ø 60mm (ACC080).

Suitable luminaire for pole installation. Ø 60mm (ACC080).

ACCESSORI / ACCESSORIES



ACC081 Attacco palo regolabile per proiettori verniciato a colore. Diametro palo 60 mm.
Floodlights adjustable pole bracket, color painted. Pole diameter: 60 mm.